

# The New Pöstlingberg Railway

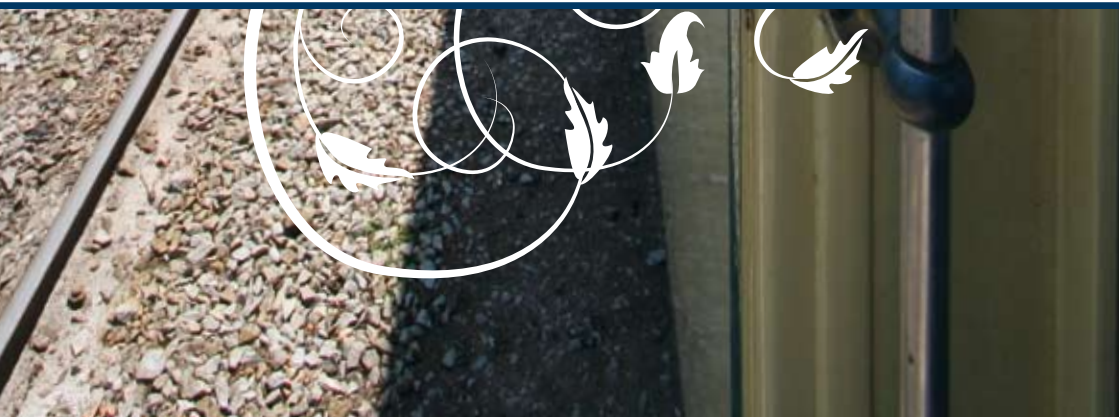
Harmoniously uniting nostalgia and modern times



edition 2011



[www.linzag.at/poestlingberg](http://www.linzag.at/poestlingberg)





# The Linz Pöstlingberg Railway – inclined to impress

For more than 110 years, the Pöstlingberg Railway has been fascinating visitors from all over the world due to its remarkable and idyllic route. By putting the new Pöstlingberg Railway into service, a direct connection between the Hauptplatz of Linz and the Pöstlingberg was created.

Get on a train and enjoy a ride up the hilltop overlooking Linz. The low-floor design of the new carriages makes the Pöstlingberg Railway easy and comfortable to use. For nostalgia fans, rides in revitalised old carriages are offered subject to availability. At the end of the journey, a striking view over Linz and the Grottenbahn with its dwarves and fairy tale world beckons.



Over a distance of 4.14 km, the Pöstlingberg Railway negotiates an altitude difference of 255 metres in approx. 20 minutes. Its gauge was adjusted from 1,000 mm to 900 mm, making for a smooth integration into the public transport network of LINZ AG LINIEN and allowing the Pöstlingberg Railway to run all the way to the Hauptplatz of Linz now.



Foto: ©Schrempf

## Pöstlingberg Railway individual tours

Rent the Pöstlingberg Railway for your own special event – for comfortable rides to the Pöstlingberg, weddings or celebrations, depending on availability.

### **Further information and fares:**

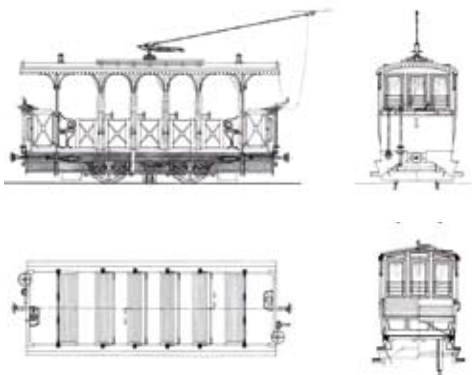
Tel. 0732/3400-7406, E-Mail: [sonderfahrten@linzag.at](mailto:sonderfahrten@linzag.at)



## Past technical data



The Pöstlingberg Railway's open carriages were first put into service on the 29th of May 1898. It wasn't until 1900 that all-season service was introduced by additional closed carriages.



### Technical data:

track length	2,900.00 m
altitude difference	254.68 m
smallest radius	50.00 m
maximum gradient	11.6 %
track gauge	1,000 mm
engine rating 1898 (opening)	2 x 20 HP
contact wire voltage	600 volts
carriage weight, empty	10,000 kg
carriage weight, occupied	12,300 kg
speed, uphill	12.0 km/h
speed, downhill	13.5 km/h
seats open carriage	24
seats closed carriage	22
standings closed carriage	16



## Present technical data



Three of the old railcars have been converted to the new 900 mm track width and equipped with newest technologies, in the course of the Pöstlingbergbahn reconstruction project.

### Technical data:

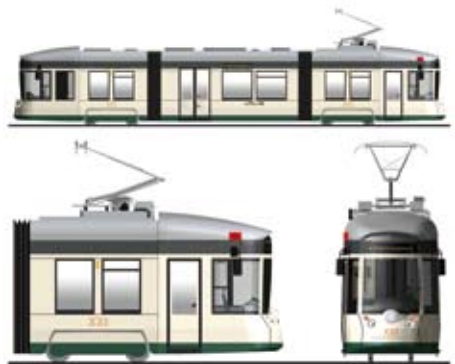
track length	4,140.00 m
altitude difference	254.68 m
smallest radius	43.00 m
maximum gradient	11.6 %
track gauge	900 mm
engine rating	2 x 68 HP
contact wire voltage	600 volts
carriage weight, empty	14,400 kg
carriage weight, occupied	16,700 kg
number of seats	22
number of standings	16
maximum speed (plain)	50 km/h
maximum speed (hill)	25 km/h



### Technical data:

track length	4,140.00 m
altitude difference	254.68 m
smallest radius	43.00 m
maximum gradient	11.6 %
track gauge	900 mm
engine rating	4 x 143 HP
contact wire voltage	600 volts
carriage weight, empty	28,000 kg
carriage weight, occupied	35,000 kg
number of seats	33
number of standings	55
maximum speed (plain)	50 km/h
maximum speed (hill)	25 km/h

Thanks to the low-floor design of the new carriages, the Pöstlingberg Railway can now be used by persons with disabilities without any problem.



# Have a nice trip!

## Streetcar Line Nr. 50

## Hauptplatz – Pöstlingberg

### Montag – Freitag

Hours		5	6–9	10	11–16	17–19	20	21	22
Hauptplatz	ab		00 30	00 30	00 30	00 30	00 30	00 30	00 21 51
Rudolfstraße	ab		02 32	02 32	02 32	02 32	02 32	02 32	02 23 53
Biegung	ab		03 33	03 33	03 33	03 33	03 33	03 33	03 24 54
Mühlkreisbahnhof	ab		04 34	04 34	04 34	04 34	04 34	04 34	04 25 55
Landgutstraße	ab		05 35	05 35	05 35	05 35	05 35	05 35	05 26 56
Spazgasse	ab	13 43	07 37	07 37	07 37	07 37	07 37	07 37	07 37 07
Hagen	ab	15 45	10 40	10 40	10 40	10 40	10 40	10 40	10 10 10
Tiergarten	ab	16 46	11 41	11 41	11 41	11 41	11 41	11 41	11 11 11
Schableder	ab	18 48	13 43	13 43	13 43	13 43	13 43	13 43	13 13 13
Hoher Damm	ab	20 50	15 45	15 45	15 45	15 45	15 45	15 45	15 15 15
Einschnitt	ab	21 51	16 46	16 46	16 46	16 46	16 46	16 46	16 16 16
Oberschableder	ab	22 52	17 47	17 48	18 48	17 47	17 47	17 47	17 17 17
Pöstlingberg Schloßl	ab	24 54	19 49	19 50	20 50	19 49	19 49	19 49	19 19 19
Pöstlingberg	an	26 56	21 51	21 52	22 52	21 51	21 51	21 51	21 21 21

### Saturday

Hours		5	6–9	10	11–15	16	17	18–19	20	21	22
Hauptplatz	ab		00 30	00 15 30	05 00 15 30	05 00 15 30	08 00 38 00	08 30 00 30	00 30 00 30	00 21 51	
Rudolfstraße	ab		02 32	02 17 32	07 02 17 32	07 02 17 32	10 02 10 32	02 32 02 32	02 32 02 32	02 23 53	
Biegung	ab		03 33	03 18 33	08 03 18 33	08 03 18 33	11 03 11 33	03 33 03 33	03 33 03 33	03 24 54	
Mühlkreisbahnhof	ab		04 34	04 19 34	09 04 19 34	09 04 19 34	12 04 12 34	04 34 04 34	04 34 04 34	04 25 55	
Landgutstraße	ab		05 35	05 20 35	05 05 20 35	05 05 20 35	13 05 13 35	05 35 05 35	05 35 05 35	05 26 56	
Spazgasse	ab	13 43	07 37	07 22 37	07 22 37	07 22 37	07 07 37	07 37 07 37	07 37 07 37	07 37 07	
Hagen	ab	15 45	10 40	10 25 40	10 25 40	10 25 40	10 10 40	10 40 10 40	10 40 10 40	10 10 10	
Tiergarten	ab	16 46	11 41	11 26 41	11 26 41	11 26 41	11 41 11 41	11 41 11 41	11 41 11 41	11 11 11	
Schableder	ab	18 48	13 43	13 28 43	13 28 43	13 28 43	13 43 13 43	13 43 13 43	13 43 13 43	13 13 13	
Hoher Damm	ab	20 50	15 45	15 30 45	00 15 30 45	00 15 30 45	15 45 15 45	15 45 15 45	15 45 15 45	15 15 15	
Einschnitt	ab	21 51	16 46	16 31 46	01 16 31 46	01 16 31 46	16 46 16 46	16 46 16 46	16 46 16 46	16 16 16	
Oberschableder	ab	22 52	17 47	17 33 48	03 18 33 48	03 18 33 48	17 47 17 47	17 47 17 47	17 47 17 47	17 17 17	
Pöstlingberg Schloßl	ab	24 54	19 49	19 35 50	05 20 35 50	05 20 35 50	19 49 19 49	19 49 19 49	19 49 19 49	19 19 19	
Pöstlingberg	an	26 56	21 51	21 37 52	07 22 37 52	07 22 37 52	21 51 21 51	21 51 21 51	21 51 21 51	21 21 21	

### Sunday and public holiday

Hours		6	7	8–9	10	11–15	16	17	18–19	20	21	22
Hauptplatz	ab			30 00 30	00 15 30	05 00 15 30	05 00 15 30	08 00 38 00	08 30 00 30	00 30 00 30	00 21 51	
Rudolfstraße	ab			02 32	02 17 32	07 02 17 32	07 02 17 32	10 02 10 32	02 32 02 32	02 32 02 32	02 23 53	
Biegung	ab			03 33	03 18 33	08 03 18 33	08 03 18 33	11 03 11 33	03 33 03 33	03 33 03 33	03 24 54	
Mühlkreisbahnhof	ab			04 34	04 19 34	09 04 19 34	09 04 19 34	12 04 12 34	04 34 04 34	04 34 04 34	04 25 55	
Landgutstraße	ab			05 35	05 20 35	05 05 20 35	05 05 20 35	13 05 13 35	05 35 05 35	05 35 05 35	05 26 56	
Spazgasse	ab	43 13	37 07	07 37	07 22 37	07 22 37	07 22 37	07 37 07 37	07 37 07 37	07 37 07 37	07 37 07	
Hagen	ab	45 15	40 10	10 40	10 25 40	10 25 40	10 25 40	10 40 10 40	10 40 10 40	10 40 10 40	10 10 10	
Tiergarten	ab	46 16	41 11	11 41	11 26 41	11 26 41	11 26 41	11 41 11 41	11 41 11 41	11 41 11 41	11 11 11	
Schableder	ab	48 18	43 13	13 43	13 28 43	13 28 43	13 28 43	13 43 13 43	13 43 13 43	13 43 13 43	13 13 13	
Hoher Damm	ab	50 20	45 15	15 45	15 30 45	00 15 30 45	00 15 30 45	15 45 15 45	15 45 15 45	15 45 15 45	15 15 15	
Einschnitt	ab	51 21	46 16	16 46	16 31 46	01 16 31 46	01 16 31 46	16 46 16 46	16 46 16 46	16 46 16 46	16 16 16	
Oberschableder	ab	52 22	47 17	17 47	17 33 48	03 18 33 48	03 18 33 48	17 47 17 47	17 47 17 47	17 47 17 47	17 17 17	
Pöstlingberg Schloßl	ab	54 24	49 19	19 49	19 35 50	05 20 35 50	05 20 35 50	19 49 19 49	19 49 19 49	19 49 19 49	19 19 19	
Pöstlingberg	an	56 26	51 21	21 51	21 37 52	07 22 37 52	07 22 37 52	21 51 21 51	21 51 21 51	21 51 21 51	21 21 21	

Times on blue background are valid from 1st of May up to and including 30st of September.  
Last ride down at 10:30 pm, last ride to the top at 10:00 pm within the stated period.

Times on white background are valid from 1st of October up to and including 30th of April.  
Last ride down at 8:30 pm, last ride to the top at 8:00 pm within the stated period.



## Streetcar Line Nr. 50

## Pöstlingberg – Hauptplatz

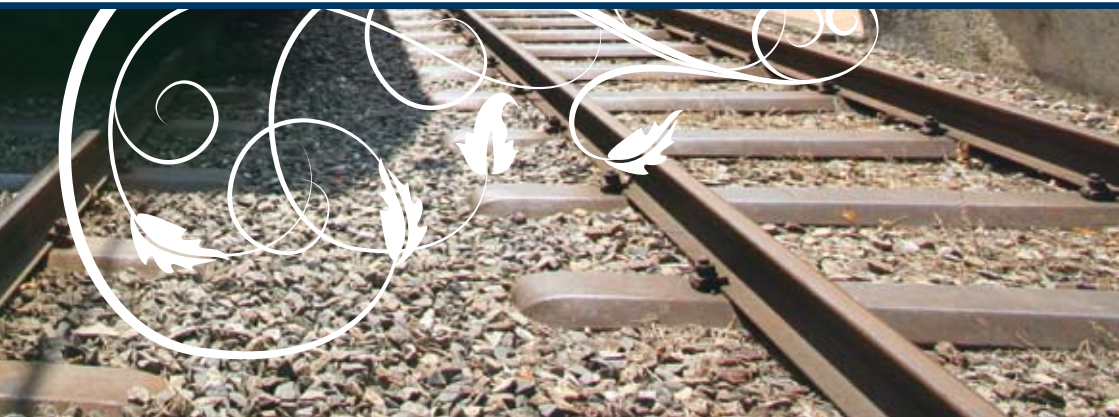
Hours	Monday–Friday				Saturday											
	5	6	20	21–22	5	6–9	10	11–16	17	18–20	21–22					
Pöstlingberg	ab 30	00	30	00	30	00	30	00	15	30	45	00	30	00	30	
Pöstlingberg Schloßl	ab 31	01	31	01	31	01	31	01	31	46	01	16	31	46	01	31
Oberschableder	ab 33	03	33	03	33	03	33	03	33	48	03	18	33	48	03	33
Einschnitt	ab 34	04	34	04	34	04	34	04	34	49	04	19	34	49	04	34
Hoher Damm	ab 35	05	35	05	35	05	35	05	35	50	05	20	35	50	05	35
Schableder	ab 37	07	37	07	37	07	37	07	37	52	07	22	37	52	07	37
Tiergarten	ab 39	09	39	09	39	09	39	09	39	54	09	24	39	54	09	39
Hagen	ab 40	10	40	10	40	10	40	10	40	55	10	25	40	55	10	40
Spazgasse	ab 42	12	42	12	42	12	42	12	42	57	12	27	42	57	12	42
Landgutstraße	ab 43	13	43	13	43	02	13	32	43	58	13	28	43	58	13	43
Mühlkreisbahnhof	ab 45	15	45	15	45	04	15	34	45	00	15	30	45	00	15	45
Biegung	ab 46	16	46	16	46	05	16	35	46	01	16	31	46	01	16	46
Rudolfstraße	ab 47	17	47	17	47	06	17	36	47	02	17	32	47	02	17	47
Hauptplatz	an 49	19	49	19	49	08	19	38	49	04	19	34	49	04	19	49

Hours	Sunday and public holiday												
	7–9	10	11–16	17	18–20	21–22							
Pöstlingberg	ab 00	30	00	30	45	00	15	30	45	00	30	00	30
Pöstlingberg Schloßl	ab 01	31	01	31	46	01	16	31	46	01	31	01	31
Oberschableder	ab 03	33	03	33	48	03	18	33	48	03	33	03	33
Einschnitt	ab 04	34	04	34	49	04	19	34	49	04	34	04	34
Hoher Damm	ab 05	35	05	35	50	05	20	35	50	05	35	05	35
Schableder	ab 07	37	07	37	52	07	22	37	52	07	37	07	37
Tiergarten	ab 09	39	09	39	54	09	24	39	54	09	39	09	39
Hagen	ab 10	40	10	40	55	10	25	40	55	10	40	10	40
Spazgasse	ab 12	42	12	42	57	12	27	42	57	12	42	12	42
Landgutstraße	ab 13	43	02	13	32	43	58	13	28	43	58	13	43
Mühlkreisbahnhof	ab 15	45	04	15	34	45	00	15	30	45	00	15	45
Biegung	ab 16	46	05	16	35	46	01	16	31	46	01	16	46
Rudolfstraße	ab 17	47	06	17	36	47	02	17	32	47	02	17	47
Hauptplatz	an 19	49	08	19	38	49	04	19	34	49	04	19	49

Times on blue background are valid from 1st of May up to and including 30th of September.  
Last ride down at 10:30 pm, last ride to the top at 10:00 pm within the stated period.

Times on white background are valid from 1st of October up to and including 30th of April.  
Last ride down at 8:30 pm, last ride to the top at 8:00 pm within the stated period.











# Tickets

All tickets are available at vending machines with touchscreens, at the LINZ AG-Customer Centre, Landstrasse 85, 4020 Linz, at select tobacconists in the city centre as well as at the Tourism Office on the Hauptplatz.



### Uphill or downhill journey

Valid on the day of issue and/or validation for a single trip or a return trip on the Pöstlingberg Railway. Trips must be started immediately. No interruption of trips included.

Ticketprice: EUR 3,40/ EUR 1,70 (red.)



### Uphill and downhill journey

Valid on the day of issue and/or validation for one journey up and down the Pöstlingberg.

Ticketprice: EUR 5,60/ EUR 2,80 (red.)



### Uphill or downhill journey – 6-Trips

Valid on the day of issue and/or validation for a single trip or a return trip on the Pöstlingberg Railway. Trips must be started immediately. No interruption of trips included.

Ticketprice: EUR 18,40/EUR 9,20 (red.)



### Adventure Ticket Uphill and downhill journey, 24h city transport network pass

In addition to both an uphill and downhill journey with the Pöstlingberg Railway, this pass allows passengers to use all public transport within the Linz Core Area for 24 hours, starting with its validation and/or purchase. Please note that your last trip must be finished by the end of this 24h period.

Ticketprice: EUR 8,60/EUR 4,30 (red.)

**Holders of valid monthly or yearly tickets issued by LINZ AG LINIEN are entitled to use the Pöstlingberg Railway without any surcharge. The extended transport entitlement included in these season tickets also applies to the Pöstlingberg Railway. Available at a reduced price for children up to age 15 and passengers entitled to reduced fares.**



# Pöstlingberg Railway Museum

The historical ambience of the former lower terminal provides the graceful setting for this museum. Serving as an information centre, various elements distributed throughout the museum detail the past and present of the Pöstlingberg Railway. The contrast between historical facts and new, modern material makes for an exciting presentation.

Here, fans of the old mountain railway will find rails, pantographs and wall displays as well as a shaft with a sprocket and a clasp brake. In a small cinema, visitors become acquainted with the history and the present-day operation of the Pöstlingberg Railway. The turning of a crank launches a driving simulation featuring a journey on an old open Pöstlingberg Railway carriage from the hilltop down to the lower terminal. Outside the museum, a closed historic carriage on old tracks preserved in their original condition is available for taking pictures during opening hours. The popular open summer carriage can be viewed and photographed in the adjoining depot.

Opening hours: 1st of March until 1st of November  
Saturdays, Sundays and holidays from 10 am to 4 pm  
Weekdays on request (for groups of 10 persons or more)

## Travelling through time with the Pöstlingberg Railway



1891

Application for the construction of a rack-and-pinion railway from Urfahr on to the Pöstlingberg

1894

Change of plans from steam-powered rack-and-pinion railway to electric adhesion railway

1897

Start of construction

1898

Opening – 6 two-axle open railcars put into operation

1948 - 1960

Modernisation of rolling stock



1983

Pöstlingberg Railway entered in the Guinness Book of World Records as the world's steepest adhesion railway

1998

100 years of Pöstlingberg Railway

2008

Last days of operation of the Pöstlingberg Railway, start of reconstruction works, opening of the Pöstlingberg Railway Museum

2009

New Pöstlingberg Railway with 3 low-floor carriages was put into service

2010

The new 3 revitalised old carriages are put into service



### Pöstlingberg

